

RF DISTRIBUTOR



R35040-XE SERIES



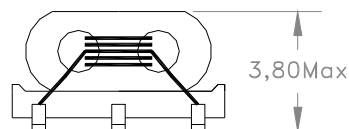
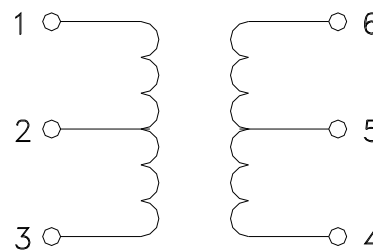
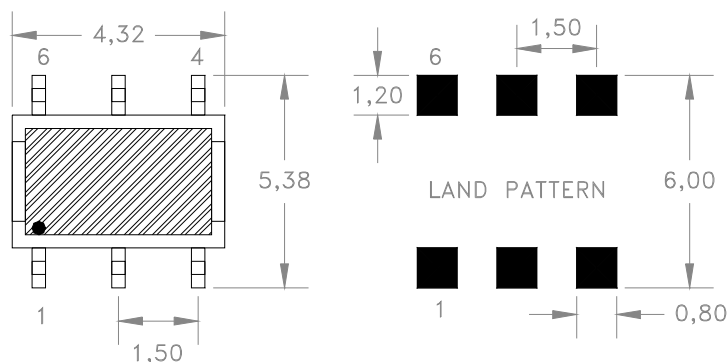
- Ideal for use in Wideband Transformer applications
- Bandwidth available from 20MHz to 1000MHz
- Operating Temperature: -40°C to +85°C
- RoHS Compliant Product
- Custom Design Available

ELECTRICAL SPECIFICATION @ 25°C

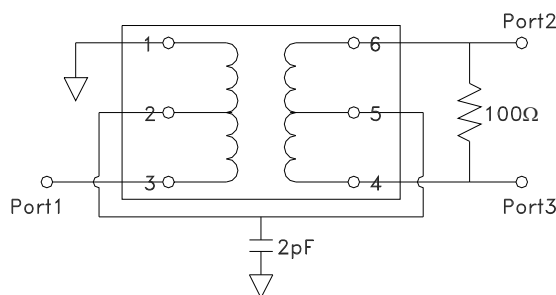
Part No R35040-	Winding Turns			μiac
	1-2	2-3	4-5=5-6	
1E	1T	3T	2T	125
2E	1T	4T	3T	125

Mechanical

Schematic



Test Circuit (50Ω Network System)



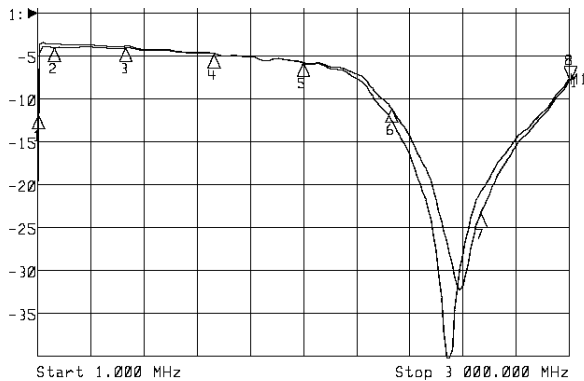
TOLERANCE

Unless otherwise specified
 inch: .XX : ± 0.015 .XXX : ± 0.004
 mm: X,X : ± 0,38 X,XX : ± 0,10

Product performance is limited to specified parameter. Data is subject to change without prior notice.

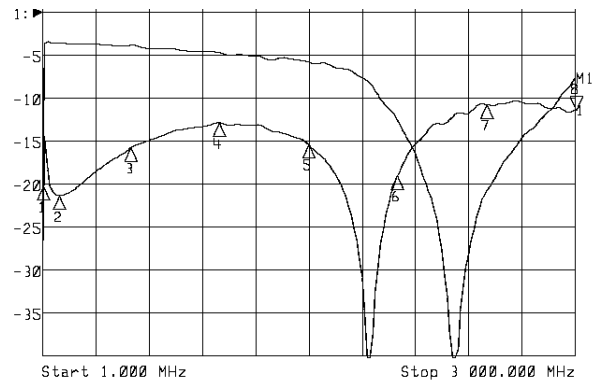
R35040-XE
0945JW

R35040-1E: Port1 to Port2 and Port3



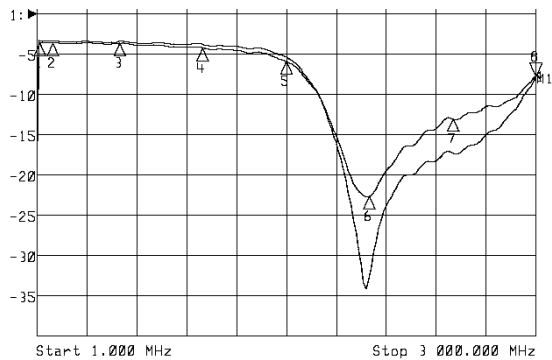
1:Mkr (MHz)	dB	2:Mkr (MHz)	dB
1: 10.0000	-11.841		
2: 100.0000	-3.974		
3: 500.0000	-4.026		
4: 1000.0000	-4.696		
5: 1500.0000	-5.757		
6: 2000.0000	-11.109		
7: 2500.0000	-23.373		
8> 3000.0000	-7.876		

R35040-1E: Port 2 to Port 3



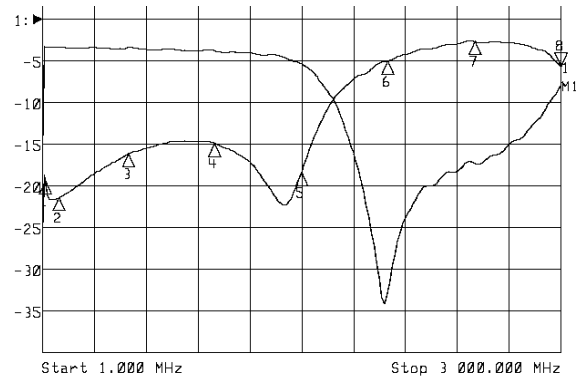
1:Mkr (MHz)	dB	2:Mkr (MHz)	dB
1: 10.0000	-20.259		
2: 100.0000	-21.337		
3: 500.0000	-15.762		
4: 1000.0000	-12.847		
5: 1500.0000	-15.404		
6: 2000.0000	-19.062		
7: 2500.0000	-10.711		
8> 3000.0000	-11.329		

R35040-2E: Port1 to Port2 and Port3



1:Mkr (MHz)	dB	2:Mkr (MHz)	dB
1: 20.0000	-3.678		
2: 100.0000	-3.591		
3: 500.0000	-3.648		
4: 1000.0000	-4.207		
5: 1500.0000	-5.911		
6: 2000.0000	-22.687		
7: 2500.0000	-13.029		
8> 2997.0010	-7.765		

R35040-2E: Port 2 to Port 3



1:Mkr (MHz)	dB	2:Mkr (MHz)	dB
1: 20.0000	-19.330		
2: 100.0000	-21.410		
3: 500.0000	-16.154		
4: 1000.0000	-14.866		
5: 1500.0000	-18.348		
6: 2000.0000	-5.001		
7: 2500.0000	-2.653		
8> 2997.0010	-5.642		

TOLERANCE

Unless otherwise specified

inch: .XX : ± 0.015 .XXX : ± 0.004

mm: X,X : ± 0,38 X,XX : ± 0,10

Product performance is limited to specified parameter. Data is subject to change without prior notice.

R35040-XE
0945JW