

# VIDEO ISOLATION TRANSFORMER



## R3557, R3596



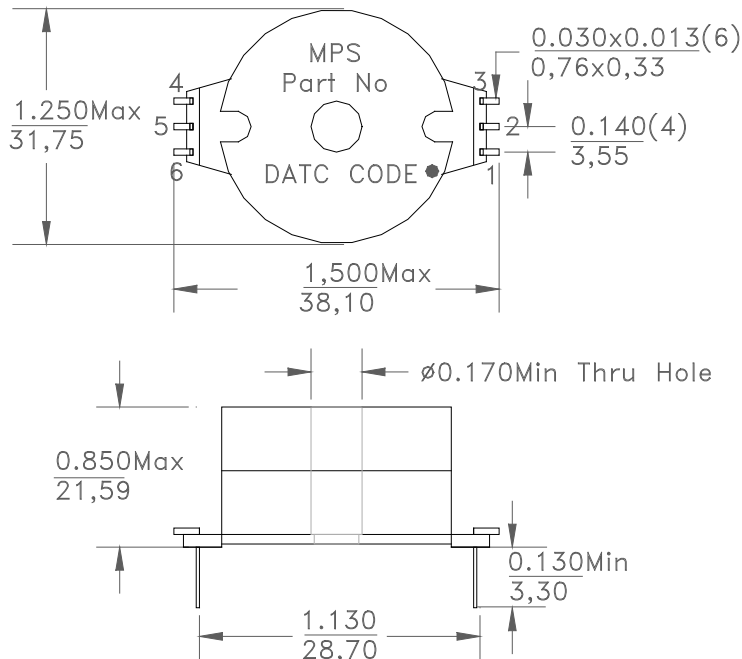
- Video hum elimination and ground isolation for CCTV applications
- Operating temperature range: 0°C to +70°C
- Hipot: 250V<sub>DC</sub>, 1KM Ω, (Pri to Sec)
- RoHS compliant product
- Custom design available upon request

### ELECTRICAL SPECIFICATION @ 25°C

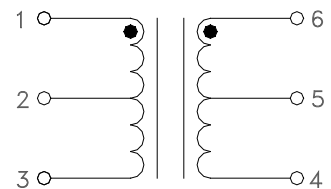
Part Number	Impedance Ratio 1-3:6-4 ±5%	Bandwidth MHz	Insertion Loss @100KHz dB Max	Inductance (mH) Min (1-3)	DCR (Ω) Max (1-3)
R3557	75Ω : 75Ω	20Hz-8MHz	0.50	900	6.0
R3596	75Ω : 100Ω	25Hz-8MHz	0.50	650	6.0

- Polarity: 1 and 6 are in phase

### MECHANICAL



### SCHEMATIC



Product performance is limited to specified parameters. Data is subject to change without prior notice.

**Dimensions**  
Unless otherwise specified, all tolerances are:  
inch: .XX : ±0.015 .XXX : ±0.004  
mm: X,X : ±0,38 X,XX : ±0,10

# VIDEO ISOLATION TRANSFORMER



## R3557



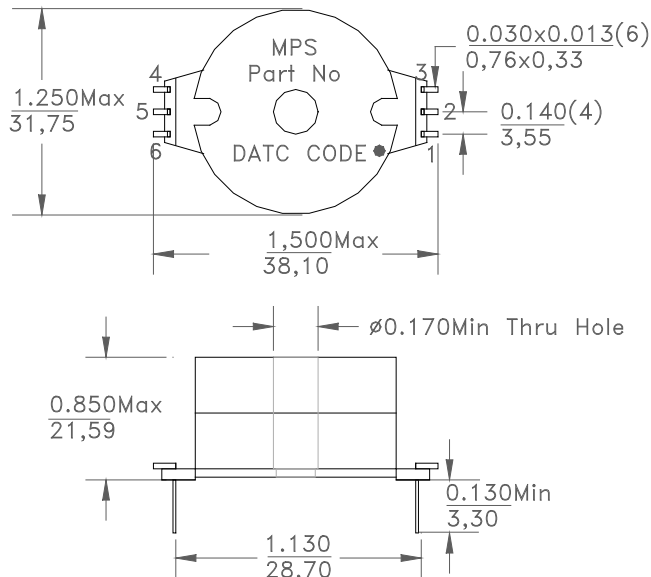
- Video hum elimination and ground isolation for CCTV applications
- Operating temperature range: 0°C to +70°C
- Hipot: 500V<sub>DC</sub>
- RoHS compliant product
- Custom design available upon request

## ELECTRICAL SPECIFICATION @ 25°C

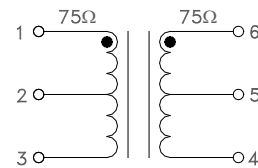
Part Number	Impedance Ratio 1-3:6-4 ±5%	Bandwidth MHz	Insertion Loss @100KHz dB Max	Inductance (mH) Min (1-3/6-4)	DCR (Ω) Max (1-3/6-4)
R3557	75Ω : 75Ω	25Hz - 8MHz		900	6.0

- Inductance measured @ 1KHz, 0.1V<sub>RMS</sub>

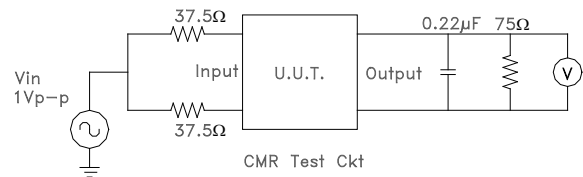
## DIMENSIONS



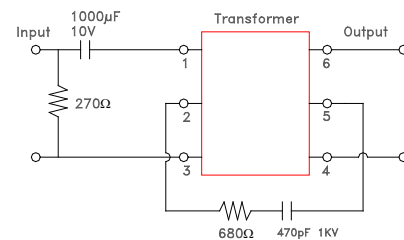
## SCHEMATIC



## CMR TEST CIRCUIT



## SUGGESTED CIRCUITRY



### Dimensions

Unless otherwise specified, all tolerances are:  
 inch: .XX : ±0.010 .XXX : ±0.005  
 mm: X,X : ±0,254 X,XX : ±0,13

Product performance is limited to specified parameters. Data is subject to change without prior notice.

13200 Estrella Ave., Bldg. B  
Gardena, CA 90248

Tel: 310-325-1043  
Fax: 310-325-1044

www.mpsind.com  
sales@mpsind.com